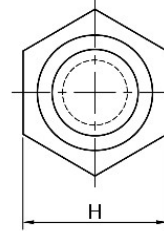
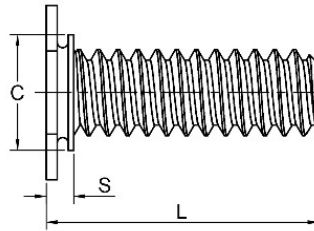
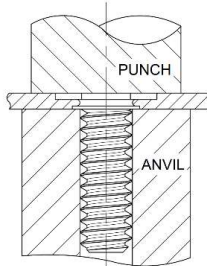


# STUDS (HEXAGON HEAD)

## Trụ ren tự giữ đầu lục giác



Part Number Designation			
NFH	M3	12	ZI
↓	↓	↓	↓
Type	Thread code	Shank code	Finish code



ALL DIMENSION ARE IN MILLIMETERS

METRIC	Thread Size x Pitch	Type		Thread Code	Length Code "L" ± 0.4 (Length code in millimeters)								Min Sheet Thickness	Hole Size in Sheet +0.80 -0.00	H ±0.4	S Max	Min. Dist. Hole C/L To Edge
		Carbon Steel	Stainless Steel														
	M3x0.5	NFH	NFHS	M3	6	8	10	12	15	18	20	25	/	1.0	4.8	6	1.25
M4x0.7	NFH	NFHS	M4	6	8	10	12	15	18	20	25	30	1.0	4.8	6	1.25	7.2
M5x0.8	NFH	NFHS	M5	/	8	10	12	15	18	20	25	30	1.0	5.0	6.35	1.25	7.2
M6x1	NFH	NFHS	M6	/	/	10	12	15	18	20	25	30	1.6	6.0	7	1.4	7.9

ALL DIMENSION ARE IN INCHES

UNIFIED	Thread Size	Type		Thread Code	Length Code "L" ± .015 (Length code 16ths of an inch)								Min Sheet Thickness	Hole Size in Sheet +0.003 -0.000	H ±0.15	S Max	Min. Dist. Hole C/L To Edge
		Carbon Steel	Stainless Steel														
	.112-40 (#4-40)	NFH	NFHS	440	.250	.312	.375	.500	.625	.750	.875	1.00	1.25	0.42	.111	.176	.045
.138-32 (#6-32)	NFH	NFHS	632	.250	.312	.375	.500	.625	.750	.875	1.00	1.25	0.42	.137	.206	.045	.250
.164-32 (#8-32)	NFH	NFHS	832	.250	.312	.375	.500	.625	.750	.875	1.00	1.25	0.42	.163	.237	.045	.300
.190-24 (#10-24)	NFH	NFHS	024	/	.312	.375	.500	.625	.750	.875	1.00	1.25	0.42	.189	.256	.045	.300
.190-24 (#10-32)	NFH	NFHS	032	/	.312	.375	.500	.625	.750	.875	1.00	1.25	0.45	.189	.256	.047	.300
.250-20 (#1/4-32)	NFH	NFHS	0420	/	/	.375	.500	.625	.750	.875	1.00	1.25	0.65	.249	.337	.067	.350