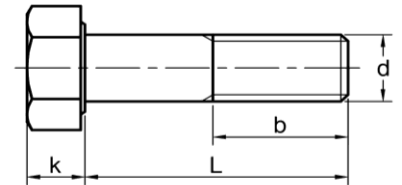
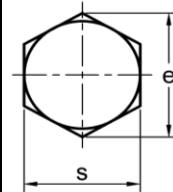


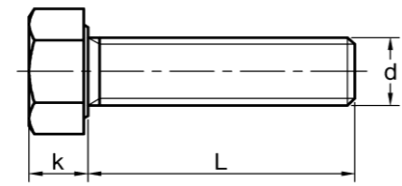
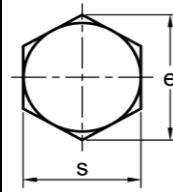
<b>CS</b>	<b>CAP SCREW</b>	<b>Part Number Designation</b>			
		<b>CSH</b> ↓ Type	<b>- 0420 -</b> ↓ Thread Code	<b>0.5</b> ↓ Length	<b>- ZI</b> ↓ Material
<b>CSH</b>	<b>CAP SCREW - HEXAGON HEAD</b>				

# Hexagon Head Cap Screws

**CSH**



**CSH-F**



Unit: INCH

Thread size				Type		Head			Length of thread (T)		Material						
				A part of Thread	Full Thread	Across Flat (s)	Across Corner (e)	Height (k)	L ≤ 6"	L > 6"	Symbol	Stand for					
UNC	Code (d)	UNF	Code (d)	<b>CSH</b>	<b>CSH-F</b>	0.428 - 0.438	0.488 - 0.505	0.150 - 0.163	0.750	1.00	SS	304/A2/18-8 Stainless Steel					
#1/4-20	0420	#1/4-28	0428										0.489 - 0.500	0.557 - 0.577	0.195 - 0.211	0.875	1.125
#5/16-18	0518	#5/16-24	0524										0.551 - 0.562	0.628 - 0.650	0.226 - 0.243	1.00	1.250
#3/8-16	0616	#3/8-24	0624										0.612 - 0.625	0.698 - 0.722	0.272 - 0.291	1.125	1.375
#7/16-14	0714	#7/16-20	0720										0.736 - 0.750	0.840 - 0.866	0.302 - 0.323	1.250	1.500
#1/2-13	0813	#1/2-20	0820														
											ZI	Zinc Plated Steel					
Tolerance on Length (L)		Nominal Thread Size		Nominal Screw Length													
				Up to 1 in, inclusive				Over 1 in to 2-1/2 in, inclusive									
		#1/4-20 to #3/4-10		-0.03				-0.06									
Length (L)					0.250	0,3125	0,375	0,4375	0.500	0,5625	0,625	0,6875	<b>VXA010624</b>				
		0.750	0.8125	0.875	0.9375	1.00	1.0625	1.125	1.1875	1.250	1.3125	1.375					
		1.4375	1.500	1.5625	1.625	1.6875	1.750	1.8125	1.875	1.9375	2.00	,...					